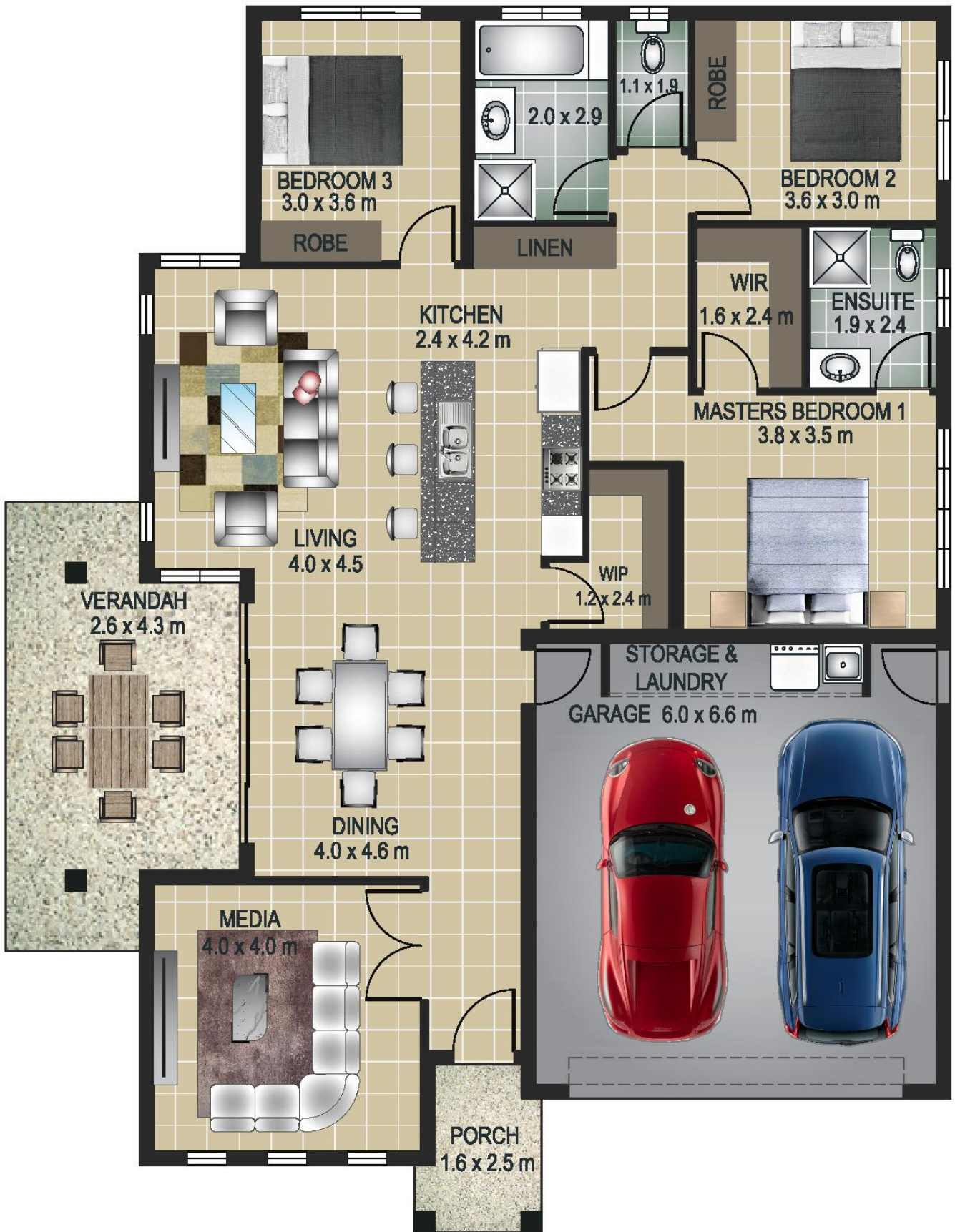




- Fully air-conditioned
- Stone bench tops
- Porcelain floors
- Stainless Steel Security Screens
- Functional open living plan
- Unique fixtures & fittings throughout, as per Display Home
- Huge entertainment area
- Double lock-up garage
- Electric roller door 2.8 high ceiling

Living	146.6 m <sup>2</sup>
Garage	42.3 m <sup>2</sup>
Verandah	11.9 m <sup>2</sup>
Porch	4.2 m <sup>2</sup>
<b>TOTAL</b>	<b>205 m<sup>2</sup></b>

**PRESTIGE HOMES NT PTY LTD**  
*Your Quality Home Builders*



**PRESTIGE HOMES NT PTY LTD**  
*Your Quality Home Builders*



Peter Hourdas - 0413 870 860 | [www.prestigehomesnt.com.au](http://www.prestigehomesnt.com.au)