



- Fully Air-Conditioned
- Stone Bench Tops
- Porcelain Floors
- Security Screens
- Functional Open Living Plan
- Huge Entertainment Area
- 2.8m High Ceiling
- Unique Fixtures & Fittings Throughout
- Double Lock-Up Garage
- Electric Roller Door

## Ground Floor

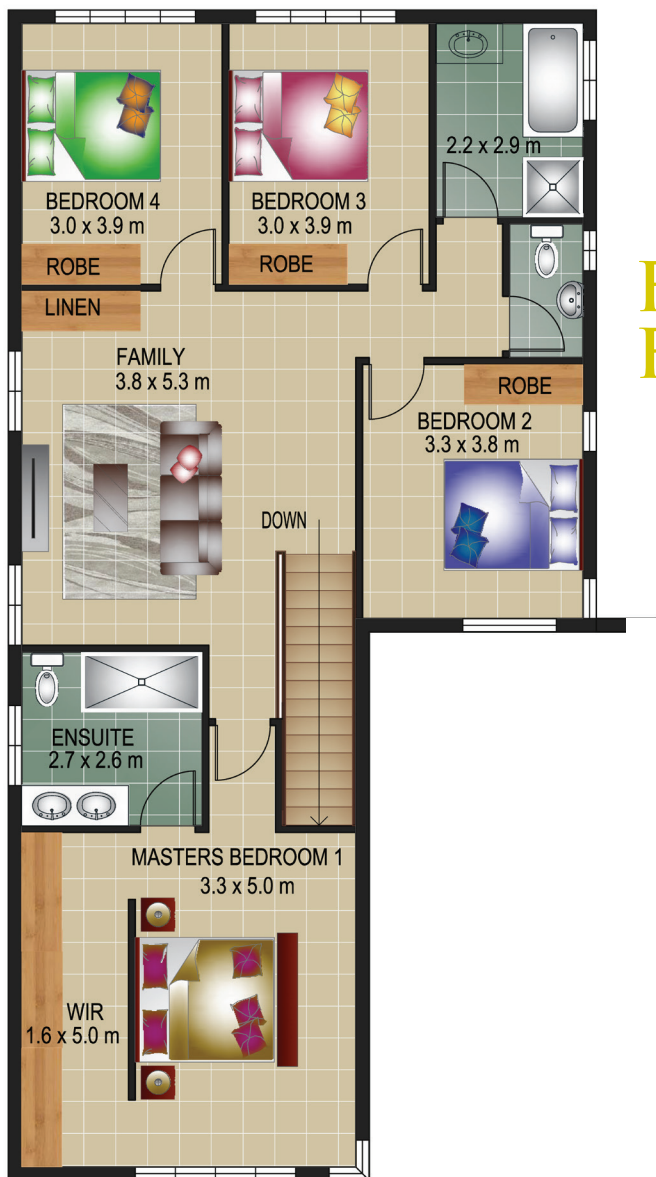
Internal Living	99.20 m <sup>2</sup>
Garage	39.00 m <sup>2</sup>
Verandah	19.60 m <sup>2</sup>
Porch	4.20 m <sup>2</sup>
<b>Total Floor Area</b>	<b>162.00 m<sup>2</sup></b>

## First Floor

<b>Total Floor Area</b>	<b>127.00 m<sup>2</sup></b>
-------------------------	-----------------------------

<b>Grand Total Floor Area</b>	<b>289.00 m<sup>2</sup></b>
-------------------------------	-----------------------------

**PRESTIGE HOMES NT PTY LTD**  
*Your Quality Home Builders*



## FIRST FLOOR

## GROUND FLOOR



**PRESTIGE HOMES NT PTY LTD**

*Your Quality Home Builders*